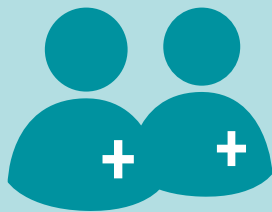


# Bereavement care in UK neonatal units: a snapshot



Our survey of neonatal units across the UK illustrates the wide variation in policies, procedures and resources between hospitals, and that adherence to best practice bereavement care is not always followed.



83%

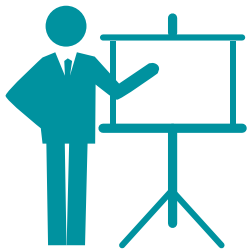
of units have access to at least one specialist bereavement lead

However, only



14%

of leads have dedicated time in their work plan to provide support on the unit



Just 12%

of units have mandatory bereavement care training

23%

of unit's bereavement leads have not received bereavement care training in the death of a baby



Only 57%

of bereavement rooms are away from the sound of other babies



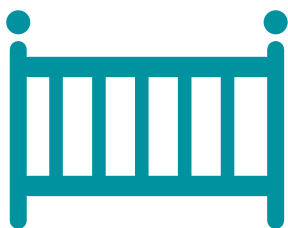
Only 15%

are soundproofed where they may be able to hear other babies cries



17%

of units do not have access to a specific space for supporting bereaved families



94%

of units have access to at least one cuddle cot



56%

of units work closely with their local hospice

**Trusts and Health Boards need to ensure that units have the support and resources they need to maintain best practice and ensure all bereaved families receive the highest quality care.**

Survey information: Survey responses were obtained from 100 neonatal units across the UK between May-July 2018.  
sands.org.uk   bliss.org.uk